



ComfortLink™ II XL1050



Model TZON1050AC52ZA

**One System.
Limitless Potential.
Complete Control.**



32-5093-04A-EN

Congratulations!

Thank you for choosing the XL1050 Smart Control. The intuitive interface and powerful features incorporated into this large color touch screen control represent the latest in climate control technology from the industry's leader in residential heating and air conditioning systems.

This guide will introduce you to many of the XL1050's features and get you started using your Smart Control right away.

To enjoy the full benefit of your XL1050 Smart Control, it should be connected to a Nexia™ Smart Home System account. Nexia is a cloud based platform that helps the smart products in your home work together in a single, convenient application. The XL1050 ships ready to serve as the central hub of an entire network of home automation devices. When connected to Nexia smart home system you can control your home's heating and cooling system and over 200 Z-Wave devices from a web enabled smart phone, PC or tablet.

For online user guide support, go to www.mynexia.com, scroll to the bottom of the page and select Help.

Features Include:

- Wi-Fi or Ethernet Connectivity
- Nexia™ climate service
- Built in Nexia Bridge
- Weather Forecast, Radar and Alerts
- Home Screen Widget Options
- Allergy Clean/Quick Clean Cycles
- Screen Lock & Guest Access Security
- Ten Year Registered Warranty
- User Setup Wizard
- Self Guided Scheduling
- One Touch Presets
- Runtime History
- System Alerts
- Screen Saver
- Clean Screen
- Color Themes



Nexia™ Benefits

The XL1050 is designed to work in concert with Nexia smart home systems to provide the convenience and advantages of a Smart Home.

Voice Control

Control your XL1050, lights and small appliances by voice command with Amazon Echo.

- Adjust the thermostat by saying, "Alexa, set the <thermostat name> to 68 degrees."
- Turn lights on or off with simple commands such as, "Alexa, turn on the front porch light."
- Set custom lighting settings such as, "Alexa, set the dining room light to 50 percent."
- Activate small appliances using a plug-in module such as, "Alexa, turn on the coffee pot."

Simplified Scheduling

Log into the Nexia smart home website. Simply point and click and your customized schedule is set straight away.

Runtime History

Keep track of your system by downloading the cooling and heating system runtime history from Nexia.

Nexia Remote Climate Access is included with the purchase of Trane smart connected controls. Up to four Trane smart controls, of any combination, may be connected to a Nexia smart home system account without a monthly service fee. Additional smart controls and home automation devices may require a monthly subscription for remote access via most web-enabled smartphones, tablets and computers. Internet service and Nexia registration required. Ask your Trane dealer for details.

Nexia Diagnostics

With your approval, Nexia Diagnostics allows your local dealer to remotely monitor your home's heating and cooling system using real-time performance data, ensuring you receive the highest possible level of Customer Service from Trane and your Trane Dealer. Ask your dealer about Nexia Diagnostics.

Automations

By connecting additional devices to the XL1050's built-in bridge, you will unleash the full capabilities of Nexia smart home systems with automations. Automations allow your smart devices to operate automatically based on specific conditions or time of day. For example, with the addition of a compatible touchpad door lock, you can automatically change your thermostat to your preferred temperature setting when entering your home. To reduce energy usage, you can also add window and door sensors to automatically adjust the XL1050's temperature setting when a door or window is left open.

Contents

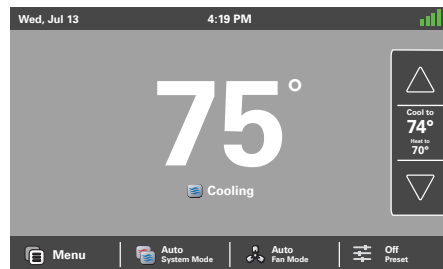
Navigation Overview	4
Home Screen	5
Menu Screen	6
Settings Screen	7
Home Screen Customization	8
Default	8
Default + Presets	9
Adding Widgets	10
User Setup Wizard	11
Display	12
Screen Layout	13
Scheduling	14
Network Setup	16
Nexia Registration	17
Weather Setup	19
Manual Scheduling	20
Changing the Schedule	21
Adding Periods	23
Deleting Periods	24
Screen Lock and Guest Access	25
Screen Lock and Guest Access	25
Nexia™ smart home system	26
Adding/Removing Z-Wave Devices (via 1050)	27
Adding Z-Wave Devices (via mobile app)	28
Advanced Z-Wave Settings	29
Other Features	30
Quiet Mode	30
Notices	
FCC & IC NOTICE	31

This product is compatible with Honeywell's EnviraCOM® 2.0 protocol. EnviraCOM® is a registered trademark of Honeywell.

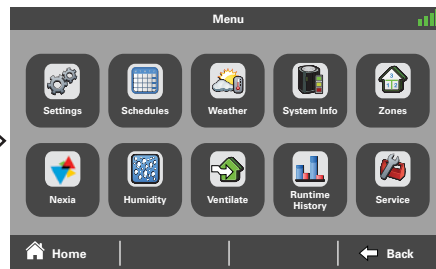
Navigation Overview

All of the XL1050 features may be accessed via the Home, Menu, and Settings screens

Home Screen

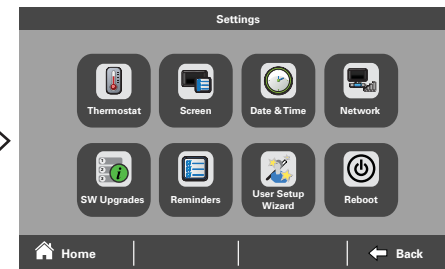


Menu Screen



From Home Screen, Press: **MENU**

Settings Screen



From Home Screen, Press: **MENU > SETTINGS**

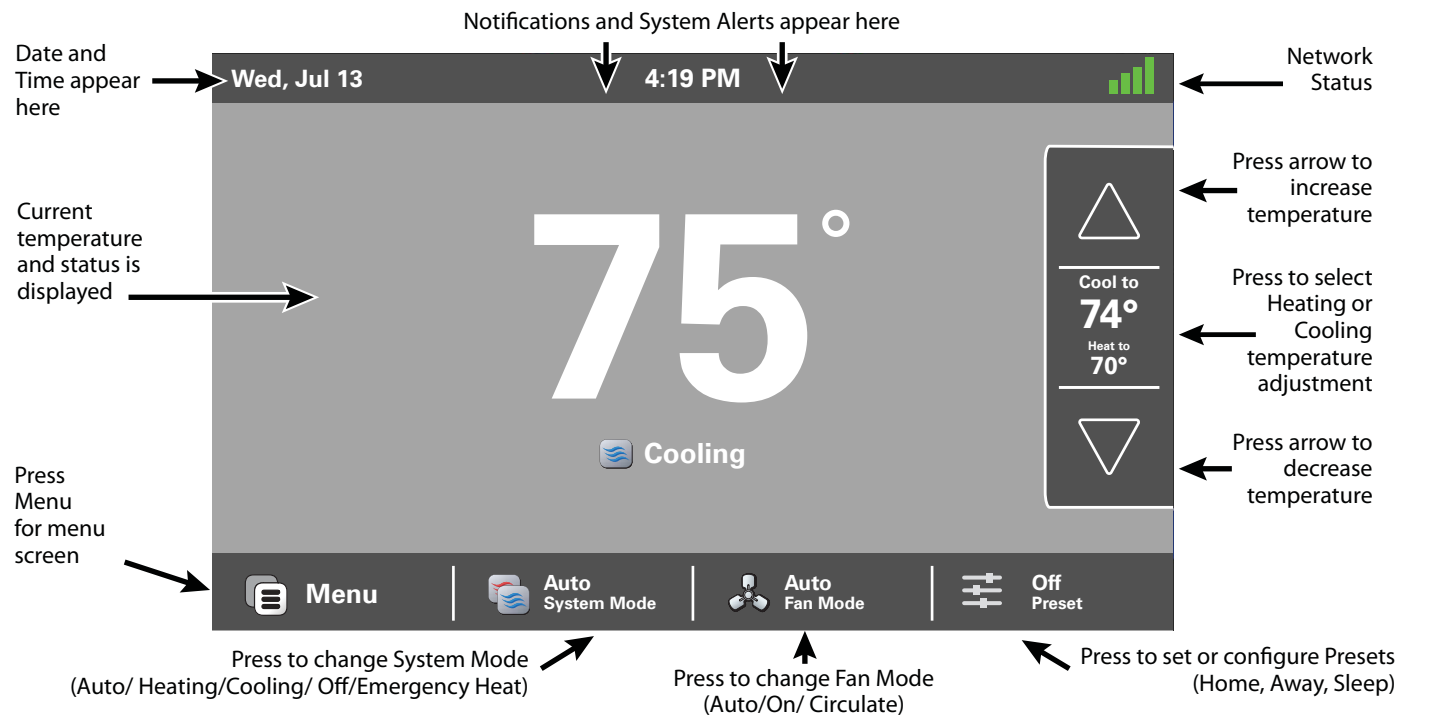
? FOR
MORE
DETAILS:

See Page 5

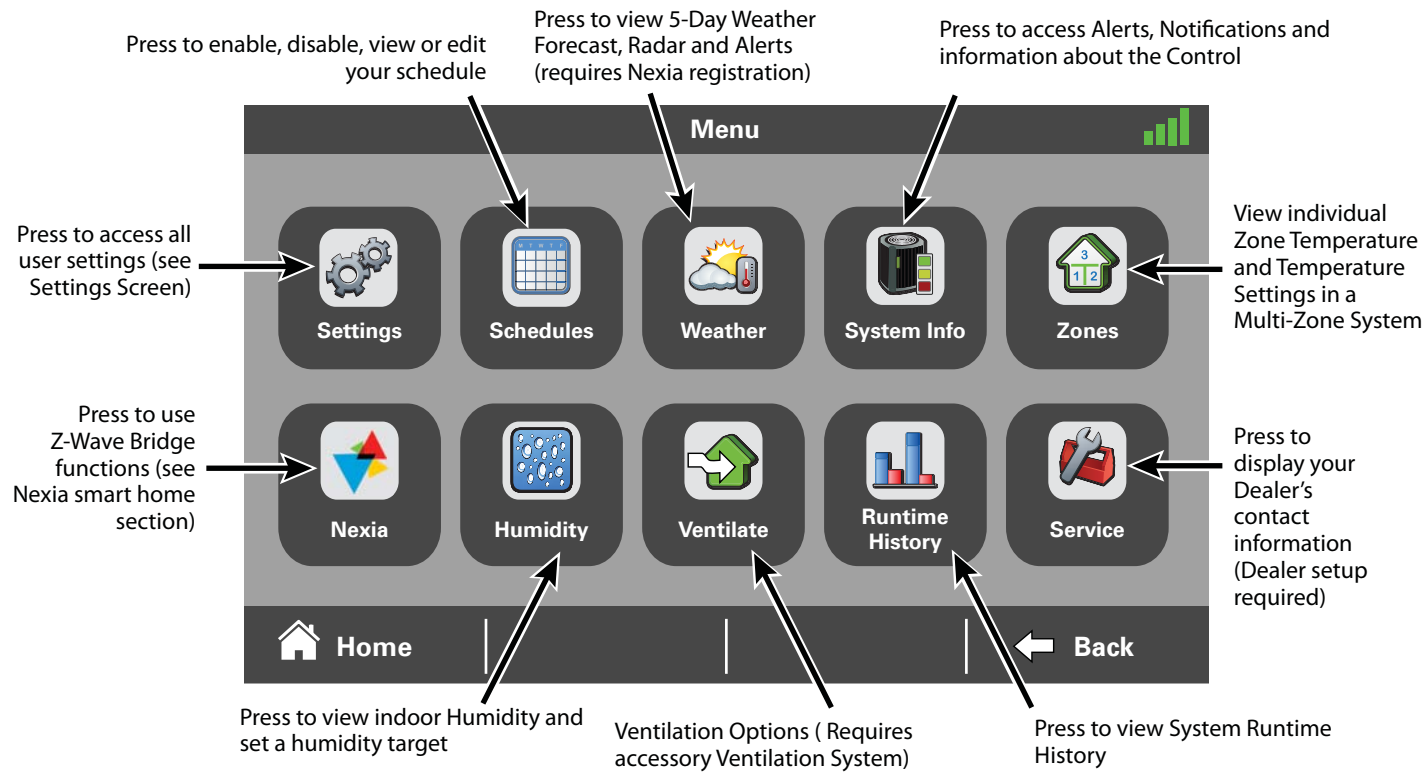
See Page 6

See Page 7

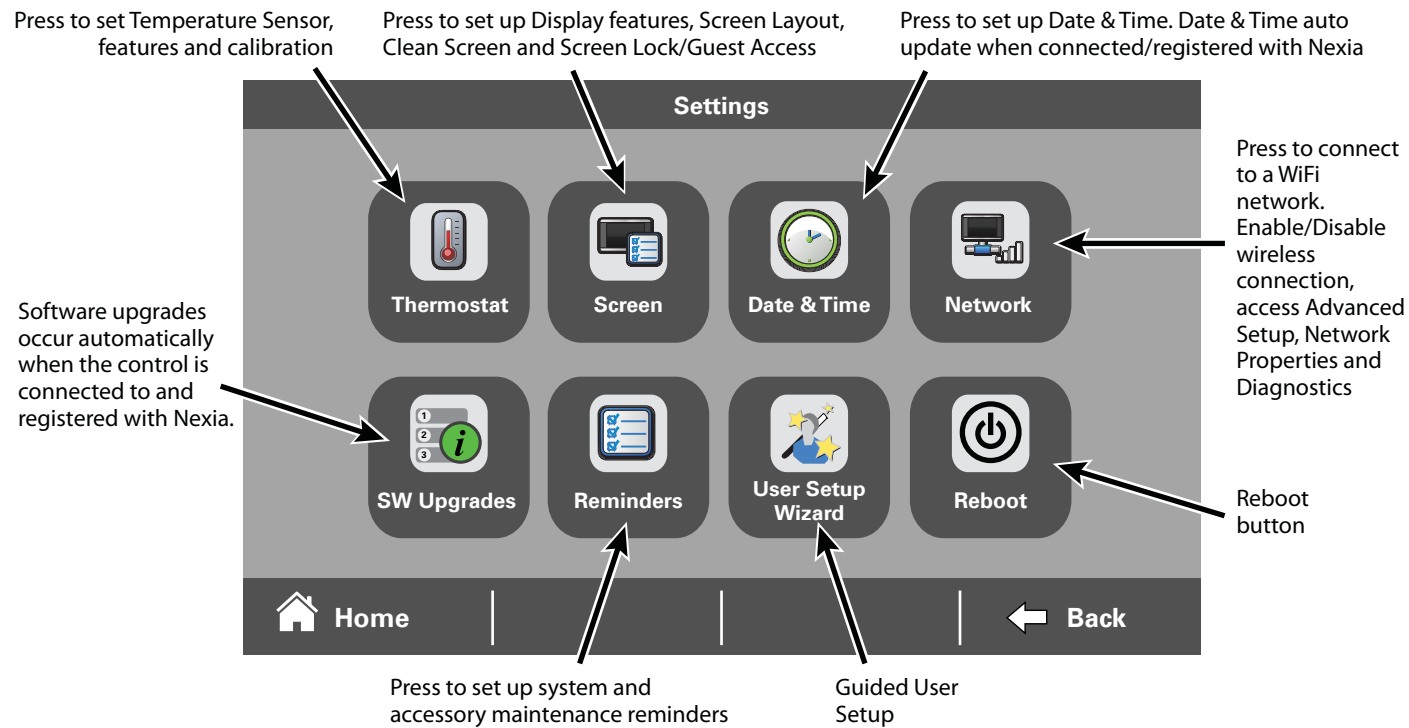
Home Screen



Menu Screen

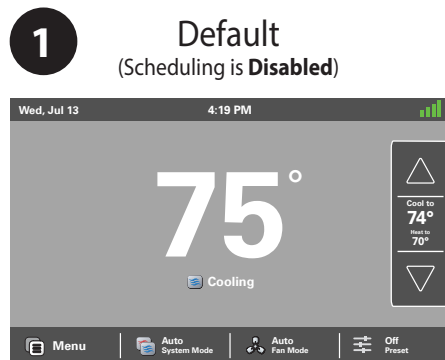


Settings Screen



Home Screen Customization

You may choose to use the Default home screen or customize the interface with the following features.

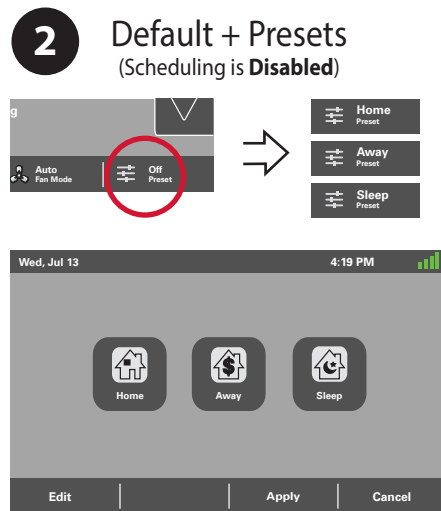


Out of the box the XL1050's home screen is set up with a basic thermostat interface. Simply adjust the **HEAT TO** or **COOL TO** setting up or down and the setting remains at that temperature until you adjust it again. Scheduling is disabled.

Press the **SYSTEM** or **FAN MODE** button to select your preferred operation.

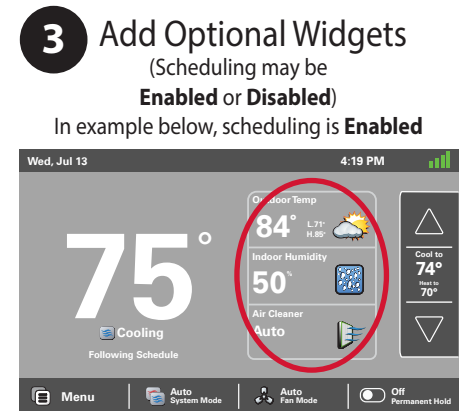
**? FOR
MORE
DETAILS:**

See Page 5



In the Default configuration, you may also choose to set up 3 presets. Using presets permits changing the heating and cooling settings by pressing one button.

See Page 9



Users may choose to display up to 3 of 7 available widgets on the home screen.

In addition, you may customize a schedule to fit your needs using the convenient Scheduling Wizard which guides you through the process.

See Page 10

2

Default + Presets

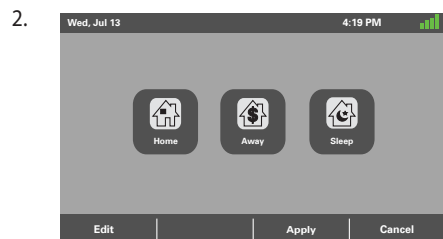
1-Touch Presets provide predetermined Set Points for Home, Away and Sleep time periods.

Note: 1-Touch Presets requires Scheduling to be disabled. To disable Scheduling, go to **MENU>SCHEDULES** and select **DISABLE**.

When scheduling is disabled, heating and cooling set points are maintained indefinitely. When a temperature change is desired, the user must manually adjust the temperature to the new setting.

Configuring 1-Touch Preset

1. Press the **PRESET** button from the home screen (If a Preset is not selected it will display **OFF**).



To edit the parameters, press the **EDIT** button, and first, select **AWAY**.

3. To change the Cooling Set Point, press the blue **COOLING SET POINT** to activate the setting. The current System Mode indicator will display blue wavy lines.

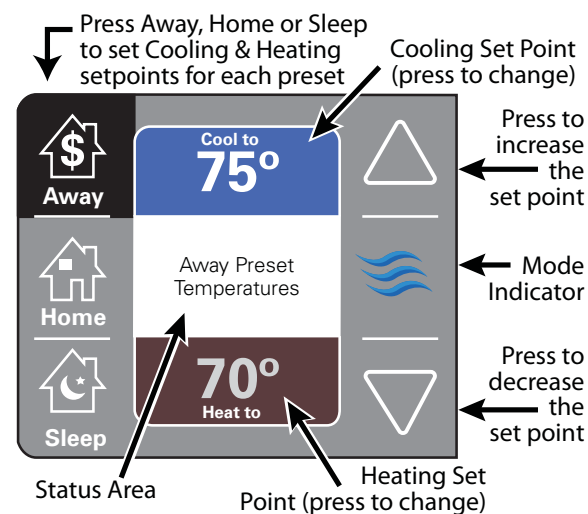
Use the **UP** and **DOWN** Arrows to adjust the Set Point to the desired temperature.

4. To change the Heating Set Point, press the red **HEATING SET POINT** area to activate the setting. The current System Mode indicator will display red wavy lines.

Use the **UP** and **DOWN** Arrows to adjust the Set Point to the desired temperature.

5. Repeat the process for Home and Sleep settings.
6. When editing is complete, press **APPLY**.

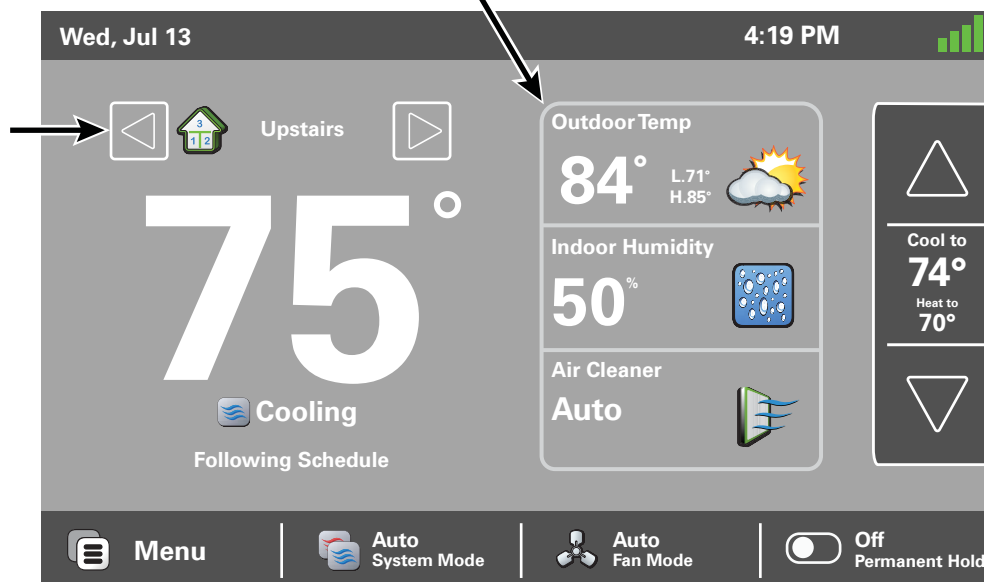
7. Choose the desired preset and press **APPLY**. The preset temperature settings will be displayed on the Home Screen. The selected preset will display at bottom right:



3 Adding Widgets

Optionally, up to 3 widgets may be chosen to appear on your home screen. They can be selected by navigating to **Menu > Settings > Screen > Screen Layout**

In multi-zone systems, you can scroll between zones by pressing the arrow keys



When scheduling is enabled, the Preset button is disabled and a Permanent Hold button is displayed. The system will follow the custom schedule you've created. You may override the schedule by adjusting the temperature settings with the up/down arrows at the right of the screen. At the next period change, the schedule will resume.

To maintain a temperature indefinitely, adjust the setpoint to the desired temperature and press the Permanent Hold button. It will then display **ON**, and the control will maintain that temperature setpoint until you manually change it. Press the Permanent Hold button again to turn Permanent Hold OFF. The Control resumes following the schedule.

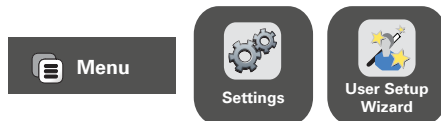
User Setup Wizard

The User Setup Wizard guides you through the XL1050's User configurable settings.

To complete the Setup Wizard and connect the XL1050 to Nexia Smart Home Systems, you need the following:

- Internet service
- Your Wi-Fi network name and password
- An internet browser
- A valid email address

To access the User Setup Wizard, select **MENU > SETTINGS > USER SETUP WIZARD**.

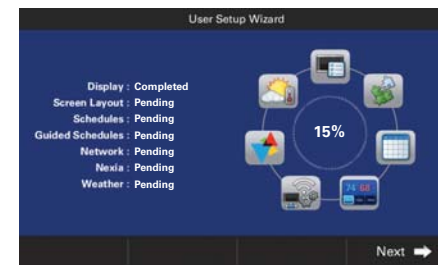


The User Setup Wizard will guide you through the following screens:

1. Display
2. Screen Layout
3. Scheduling
4. (A) Guided Schedules **OR** (B) 1-Touch Presets
5. Network
6. Nexia
7. Weather

Note: You may skip any section of the Wizard by pressing Cancel. It is not possible to exit or go back to a completed section after starting the process.

After each step, the Wizard will show your progress. Press **Next** to begin the next section.

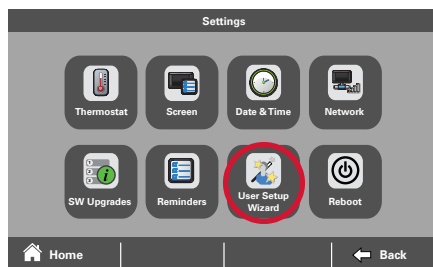


? TIP Any settings can be changed at a later date either manually, or by running this Wizard again.

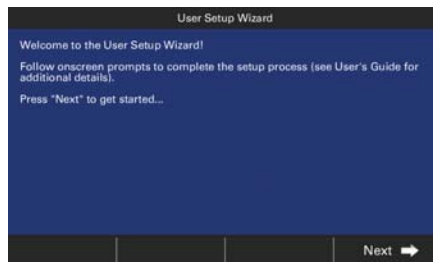
Begin wizard

From Home Screen, Press:

MENU > SETTINGS > USER SETUP WIZARD



Select **User Setup Wizard** to begin.



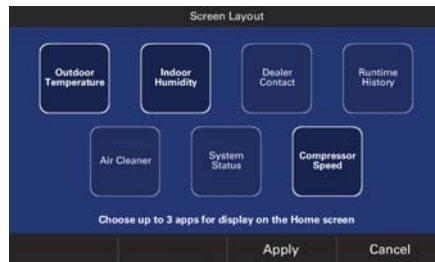
Press **NEXT** and set your preferred display brightness, backlight, screen saver and color theme settings.

1) Display



Press **NEXT**

2) Screen Layout



Select up to 3 widgets from the layout screen and press Apply. These widgets will be displayed on the home screen.

Screen Layout Options

- **Outdoor Temperature** - Displays outdoor temperature on home screen.¹ Press widget to display 5 day weather forecast, alerts and radar.
- **Indoor Humidity** – Displays indoor relative humidity on home screen.
- **Dealer Contact** – The servicing Trane dealer's name will be displayed on the home screen widget.^{1,2} Press the dealer widget for contact information.
- **Runtime History** – Displays runtime history widget on home screen. Press the widget to display daily and monthly runtime history with average indoor and outdoor temperature^{1,3}.
- **Air Cleaner** – Displays air cleaner widget on home screen. Press the widget to display and select air cleaning options:
 - Auto** – operates whenever system fan is on
 - Quick Clean** – 3 hour air cleaner power cycle
 - Allergy Clean** – 24 hour air cleaner power cycle
- **System Status** – The system status widget is displayed on the home screen. Press the widget to display cooling or heating, accessory⁴ and zoning⁵ system status.
- **Compressor Speed** – Displays Trane's TruComfort™ variable speed compressor speed as a percent of maximum speed.

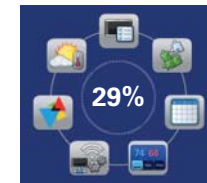
¹ Requires internet service and registration with Nexia™ smart home system.

² Requires the servicing Trane dealers code to be entered in the control.

³ Requires weather service to be enabled.

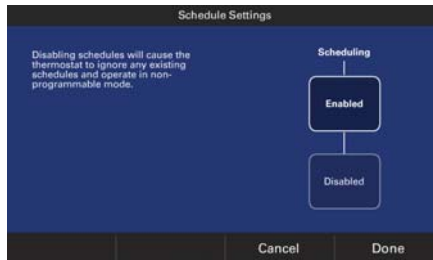
⁴ Requires accessories to be installed.

⁵ Requires Trane zoning system to be installed.



Press **NEXT**

3) Scheduling



Scheduling Options in Wizard

- **Enabled** – Guided Scheduling will begin.
See 4A: Guided Scheduling
- **Disabled** – 1-Touch Preset Options of Away, Home and Sleep can be set.
See 4B: 1-Touch Presets

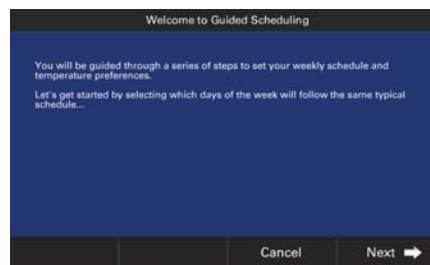


Press **NEXT**

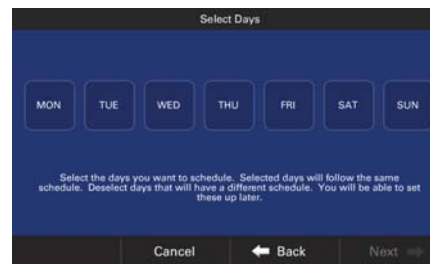
4A) Guided Scheduling

(If Scheduling **Enabled** Chosen)

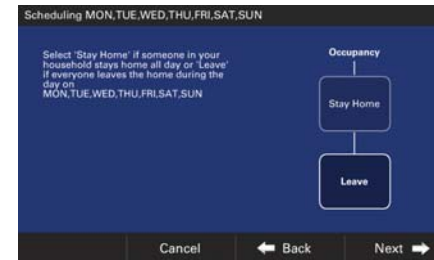
After pressing Scheduling **Enabled**, the welcome to Guided Scheduling screen is displayed.



Guided Scheduling is a convenient way to quickly revise the default schedule and customize a schedule with your preferred settings for comfort or energy savings. Press **NEXT**.



Select the days you want to schedule. Press **NEXT**.



Select **STAY HOME** or **LEAVE**. Press **NEXT**. Stay Home will set up 2 periods per day, wake and sleep. Leave will set up four periods: Wake, Away, Home and Sleep. Each period's cooling and heating temperature setting was pre-programmed at the factory for comfort.



Adjust the time you would prefer the Wake Period to Start using the up and down arrows. Press **NEXT**.



Adjust the cooling and heating system Wake Period Temperature setting by adjusting the **UP** and **DOWN** arrows. To change the cooling setting press the blue **COOL TO** button. To change the heating setting press the red **HEAT TO** button. Press and follow the onscreen instructions to complete Guided Scheduling.

4B) 1-Touch Presets

(If Scheduling **Disabled** Chosen)

1-Touch Presets provide predetermined Heating and Cooling Set Points for Home, Away and Sleep time periods.

See page 9 for detailed instructions how to configure 1-Touch presets.



Press **NEXT**

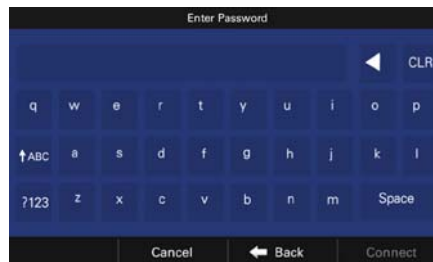
5) Network Setup

There are three ways to connect the XL1050 Control to a local network:

1. Wi-Fi connection

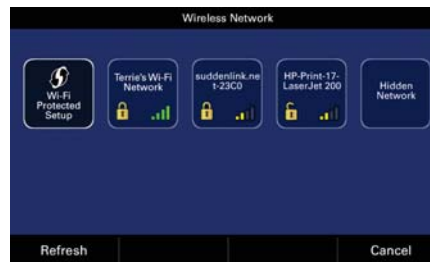


Select your network



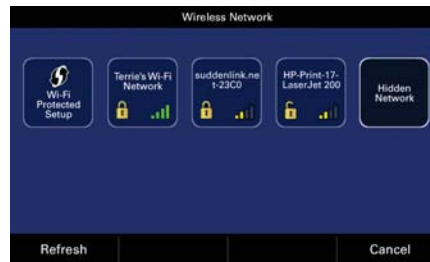
Enter your Password then press **CONNECT**.

2. Wi-Fi connection using WPS



Press the WPS button on your router, then return to your XL1050 Control and press the **WI-FI PROTECTED SETUP** button on the Wireless Network screen. Press **NEXT**.

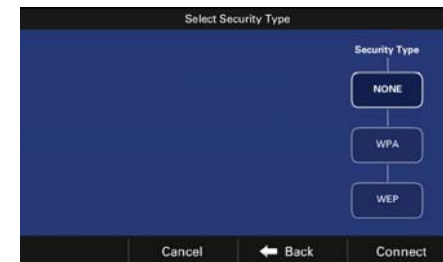
3. Wireless Wi-Fi connection using a "hidden network."



Press "**Hidden Network**" which will be at the end of the list of available networks. If there are more than eight networks, you will need to scroll to the next page.



Enter your SSID, which is the name of the router, then press **NEXT**.



Next, select the security type for this network. If you select **None**, press **Connect**.

5) Network Setup (cont.)

If you select **WPA** or **WEP**, you will need to enter a password, then **CONNECT**.

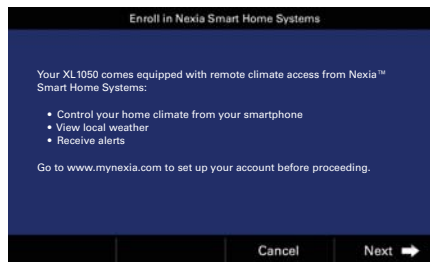


4. The XL1050 also features an Ethernet jack and may be connected to a router using CAT5 cable. The control will recognize an Ethernet connection and the User Wizard will skip the Wireless setup screens and display the Nexia Registration screen next.

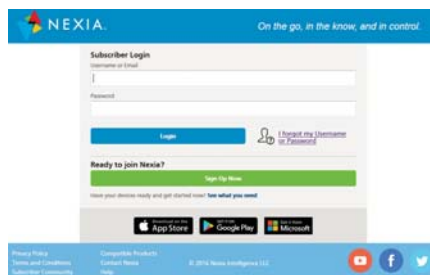


Press **NEXT**

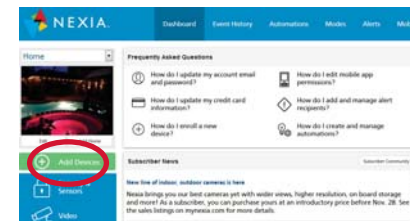
6) Nexia Registration



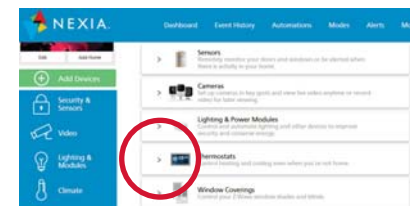
To control your home climate system from your web enabled smartphone, tablet or computer go to www.mynexia.com and set up a Nexia account. If you already have an account, log in and select **ADD DEVICES**.



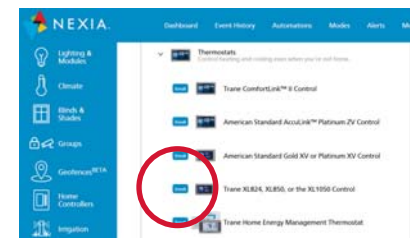
Select **SIGN UP NOW** to set up an account or log in to an existing account.



From the Nexia Dashboard select **ADD DEVICES**.



Select the **THERMOSTATS** drop down arrow.

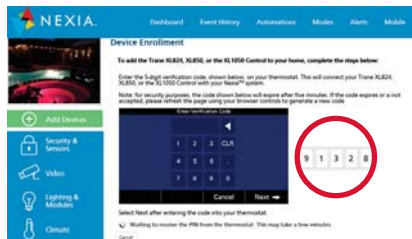


Select the **ENROLL** button for Trane XL824, XL850 or the XL1050 Control.

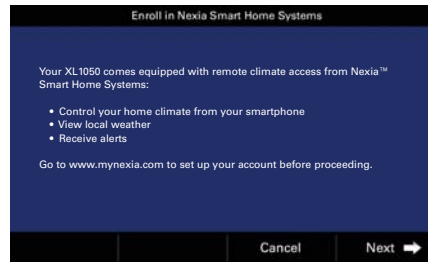
6) Nexia Registration (cont.)



Press **CONTINUE**.



Nexia will generate a Pin Code. Record the Pin Code.



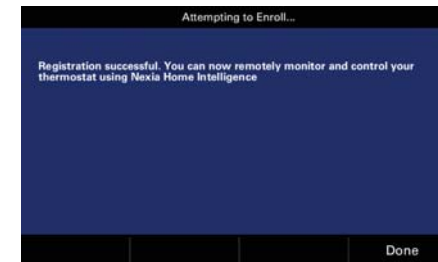
Return to the XL1050 control and Press **NEXT**.



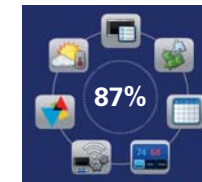
Enter the Pin Code and Press **NEXT**.



Read the License Agreement, then **ACCEPT** or **DECLINE**.



Registration successful. Press **DONE**.

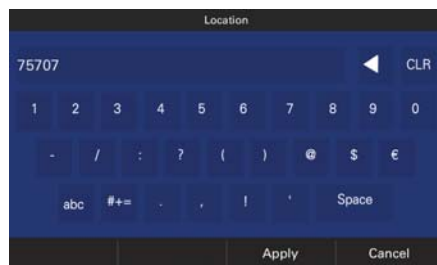


Press **NEXT**

7) Weather Setup



To view your local weather press **LOCATION** and enter your Zip Code.



Use the backspace button to delete the current zip code. Enter the new zip code and press **APPLY**.



To view the 5 day forecast press **FORECAST**.

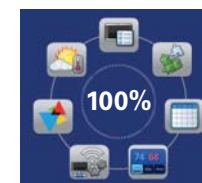


To view the weather map press **RADAR**.



To view weather warnings press **ALERTS**

Wizard
is
Complete!



User Setup Wizard

Manual Scheduling

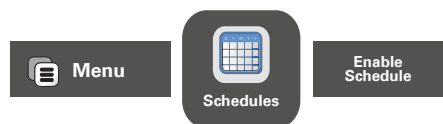
The XL1050 Smart Control is capable of adjusting the temperature settings throughout the day according to a user-programmable schedule.

Each day of the week can have its own unique schedule, and each day can have a maximum number of four periods.

Periods define the time of day when the target temperature is adjusted. Each day can have from one to four periods, and each day can have a different number of periods. The Scheduling Screen shows the start time for each Period highlighted across the top row.

Important: Scheduling must be enabled before a schedule can be defined. To verify that scheduling is enabled, navigate to **MENU>SCHEDULES** and verify scheduling is enabled. If enabled a Weekly Schedule will be displayed. If not, a message will indicate scheduling is disabled..

To Enable Scheduling, select the following: **MENU > SCHEDULES > ENABLE SCHEDULE.**



After pressing **ENABLE SCHEDULE**, the factory default week-long schedule screen will be displayed. The schedule displayed is a 7 day schedule with up to 4 periods per day. The four periods include: Wake, Away, Home and Sleep. Each period's cooling and heating temperature setting was pre-programmed at the factory.

The schedule can be changed in the following ways:

- Guided Scheduling – See the Guided Scheduling portion in the User Wizard. A series of screens will aid you in setting up a schedule.
- Manual Scheduling – To manually schedule, press anywhere on the Weekly Schedule screen to begin modifying the schedule. You may modify, add and delete periods. See the samples on the following pages.

Weekly Schedule									
		6:00	8:00			6:00	8:00	10:00	
MON	Wake	75°	70°	Away	75°	70°	Home	75°	Sleep
TUE	Wake	75°	70°	Away	75°	70°	Home	75°	Sleep
WED	Wake	75°	70°	Away	75°	70°	Home	75°	Sleep
THU	Wake	75°	70°	Away	75°	70°	Home	75°	Sleep
FRI	Wake	75°	70°	Away	75°	70°	Home	75°	Sleep
SAT	Wake	75°	70°	Away	75°	70°	Home	75°	Sleep
SUN	Wake	75°	70°	Away	75°	70°	Home	75°	Sleep
<div> <div>Disable Schedule</div> <div>Guided Schedule</div> <div>← Back</div> </div>									

Changing the Schedule

The day of the week to be scheduled is highlighted

To change the temperature settings in each period and adjust the period start and stop time press the red or blue area. The up/down Day arrows will change to Temperature and Add/Delete period buttons will change to Time Start/Time Stop

Press here to add a period.
See page 23

Press here to delete a period.
See page 24

Use the up/down arrows to scroll through the days of the week

Press the period name: wake, away, home, sleep in the gray area twice to rename the period

Press Grouping to apply changes to multiple days

Schedule	Mon	Tue	Wed	Thu	Fri	Sat	Sun
6:00am - 8:00am	75°	75°	75°	75°	75°	75°	75°
8:00am - 6:00pm	Wake	Away	Away	Away	Home	Home	Sleep
6:00pm - 10:00pm	70°	70°	70°	70°	70°	70°	70°

Changing the Schedule (cont.)

Changing Period Start or End Times

1. Press anywhere in a Period to make it active. Other Periods will dim and the Start and End times for this Period will be in black boxes at the top of the screen.
2. Press **TIME START** or **TIME END** and adjust the time using the **UP** and **DOWN** arrows. Note: The XL1050 uses intelligent technology and will not allow setting an illogical start or end time. Periods must be at least 30 minutes in duration.

Changing Period Set Points

1. Press the active Period's Cooling or Heating Temperature Set Point.
2. Adjust the Set Point using the **UP** or **DOWN** arrows.

Changing the Period Name

1. Press the **PERIOD NAME** (Wake, Away, etc.).
2. Select a predefined name or press **NEW** and select **NEXT**.
3. If selecting a new name, enter the name using the on-screen keyboard.
4. Press **NEXT**.

Press to adjust start and end times

To change temperature settings press in the red or blue area, then adjust the setting up or down with the arrows on the right.

The screenshot shows a schedule interface with a grid of days (Mon-Sun) and time slots. The grid is divided into three rows: Time Start, Period Name, and Time End. The Time Start row shows times like 6:00am, 8:00am, 6:00pm, and 10:00pm. The Period Name row shows names like Wake, Away, Home, and Sleep. The Time End row shows temperatures like 75° and 70°. Arrows indicate how to adjust start/end times, temperature set points, and period names.

	Mon	Tue	Wed	Thu	Fri	Sat	Sun
Time Start	6:00am	8:00am			6:00pm	10:00pm	
Period Name	Wake	Away			Home	Sleep	
Time End	75°	70°			75°	70°	

Time Start

Time End

Apply

Cancel

To rename a Period, press in the gray area.

When all changes have been made, press Apply to save and exit or press cancel to discard all changes that were made to this schedule.

Adding Periods

Adding Periods

1. Press **ADD PERIOD**, the Add Period Screen is displayed.
2. Press the green circle where you would like to insert a Period.
3. Choose a name for the new Period or select New to define a custom name and press **NEXT**.
4. If selecting a new name, enter the name using the on-screen keyboard.
5. Press **NEXT**.
6. Press **APPLY** to save your changes and return to the Schedule screen. The new period should be displayed.

Press one of the plus signs to insert a new period here.

The screenshot shows the 'Add Period' screen with a table of settings. A green plus sign is highlighted at the bottom left of the table, with an arrow pointing to it from the text 'Press one of the plus signs to insert a new period here.'

8:00am	6:00pm	10:00pm
75°	75°	75°
Away	Home	Sleep
70°	70°	70°

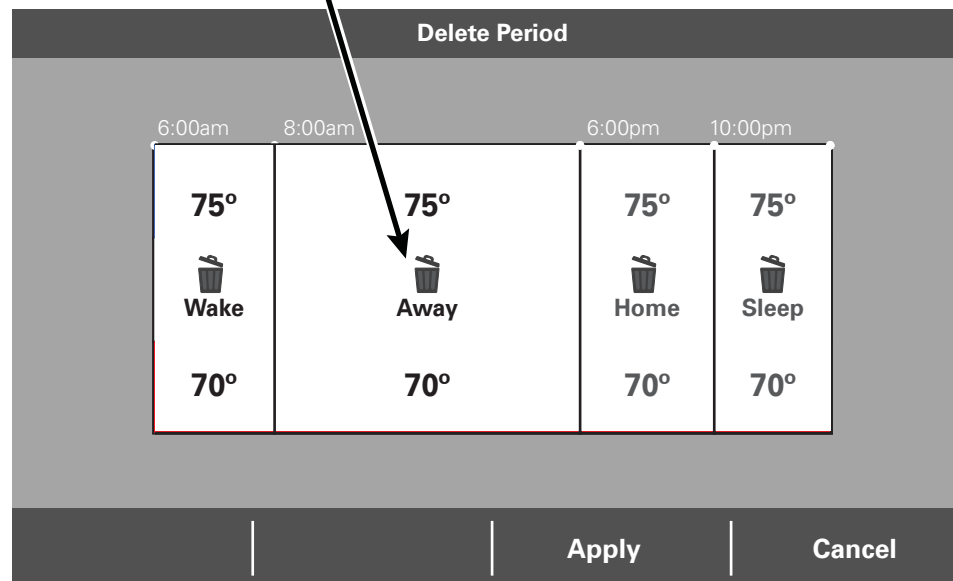
At the bottom of the screen are two buttons: 'Apply' and 'Cancel'.

Deleting Periods

Deleting Periods

1. From the Schedule Screen press **DELETE PERIOD**, the Delete Periods Screen is displayed.
2. Press the **TRASH CAN** icon in the Period(s) you wish to delete.
3. Press **APPLY** to save your changes and return to the Schedule Screen. The changes should be reflected in the display.

Press one of the trash cans to delete that period.



Screen Lock and Guest Access

The XL1050 features several options to lock the screen so users cannot make unwanted changes.

Turning on Guest Access allows Users to make up to 5 degree changes to temperature settings. All other settings will remain locked.

Applying screen lock will cause the screen to lock after 1 minute of inactivity. Press and hold the Menu button for 5 seconds to temporarily unlock a locked screen.

Enabling Screen Lock and Guest Access

1. Press **MENU>SETTINGS>SCREEN>SCREEN LOCK**
2. Press **ON** to enable Screen Lock.
3. To enable Guest Access press **ON**.

Disabling Screen Lock and Guest Access

1. To disable Screen Lock or Guest Access temporarily unlock the feature and navigate to the Screen Lock and Guest Access feature screen.
2. Press **OFF** to disable Guest Access or Screen Lock.

Screen Lock

Screen Lock allows you to lock the screen so Users can't make unwanted changes.

Turning on Guest Access allows Users to make up to 5 degree changes to setpoints. All other settings will remain locked.

Applying Screen Lock will cause the screen to lock after 1 minute of inactivity. Press and hold the "Menu" button for 5 seconds to temporarily unlock a locked screen.

Guest Access

On

Off

Screen Lock

On

Off

Apply

Cancel

Nexia™ smart home system

When enrolled to a Nexia™ smart home account, the XL1050 is a Z-Wave Plus security-enabled device that can serve as a central hub for an entire network of home automation devices, including all non-battery powered devices that will act as repeaters on your network. Your XL1050 can also display local weather conditions, five-day forecasts and National Weather Service warnings and alerts. See the section on Adding Z-Wave Devices for more information on taking advantage of this functionality.

A basic Nexia™ smart home account subscription is included with the XL1050 Control at no additional charge.

Note: Adding additional devices may add charges to your Nexia™ smart home account.

To create your Nexia™ smart home account go to www.mynexia.com.



Adding/Removing Z-Wave Devices (via XL1050)

Your XL1050 is designed to integrate seamlessly with a Nexia™ smart home system.

Adding Z-Wave Devices

1. From the **HOME** Screen, press **MENU**, then press **NEXIA**.
2. Press **ADD DEVICE** and follow the device manufacturer's instructions for setting the Z-Wave device into learn mode. You will

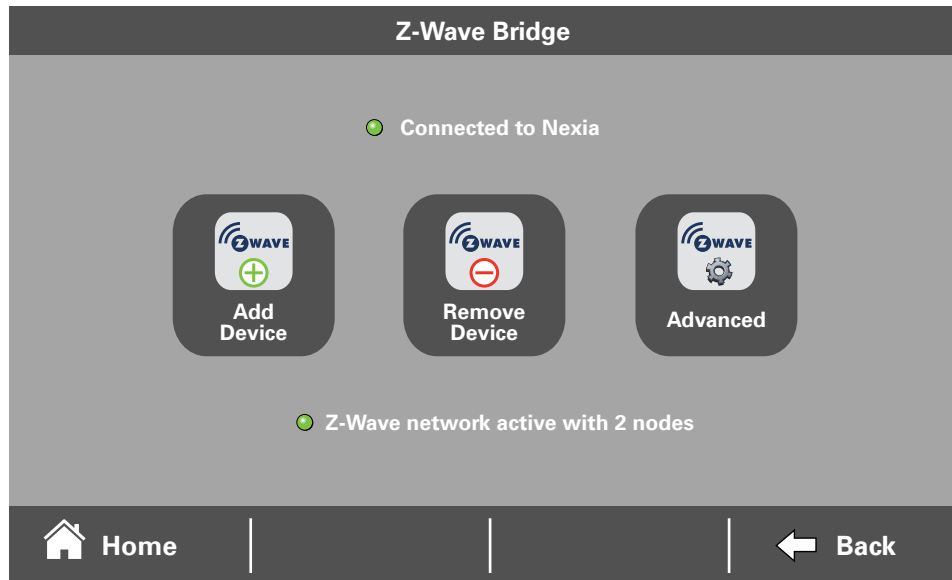
have four minutes to set the device into learn mode after pressing the **ADD DEVICE** button.

Removing Z-Wave Devices

1. From the **HOME** Screen, press **MENU**, then press **NEXIA**.
2. Press **REMOVE DEVICE** and follow the manufacturer's instructions for setting the Z-Wave device into learn mode. You will have four minutes to set the device into learn mode after pressing the **REMOVE DEVICE** button.

Advanced Z-Wave Settings

Press **ADVANCED** for advanced Z-Wave functions including unregistering your bridge from Nexia or factory resetting your bridge. See the Advanced Z-Wave Settings section for more information.

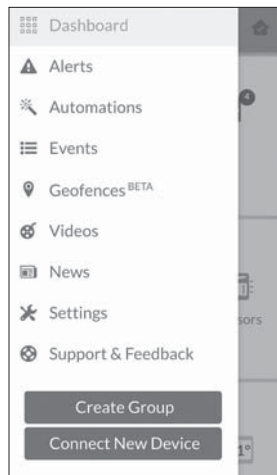


Adding Z-Wave Devices (via mobile app)

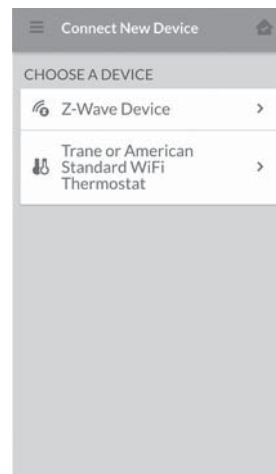
Alternatively, your XL1050 allows you to add Z-Wave devices using the Nexia app on your mobile device.

Adding Z-Wave Devices

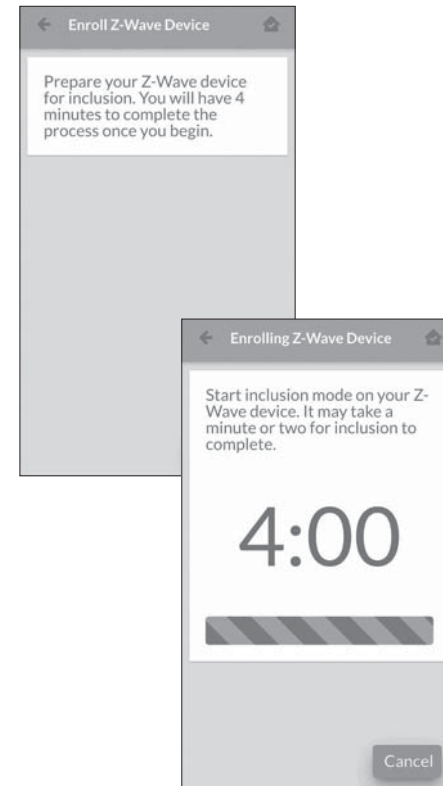
1. Start the Nexia app.
2. Press the menu button in the top left corner.
3. At the bottom of this slide out menu, press *Connect New Device*.



4. Select *Z-Wave Device*.



5. When prompted, prepare the device to be added to the Z-Wave network by following the device manufacturer's instructions to put device into add mode. You will have four minutes to complete this process.



Advanced Z-Wave Settings

Nexia's **ADVANCED SETTINGS** screen contains three very powerful functions. Each of these functions is very specific and should be approached with a measure of caution. They cannot be "undone."

Learn

This function copies a new Z-Wave network to the bridge from another controller. In addition, it removes all current devices from the bridge.

Unregister

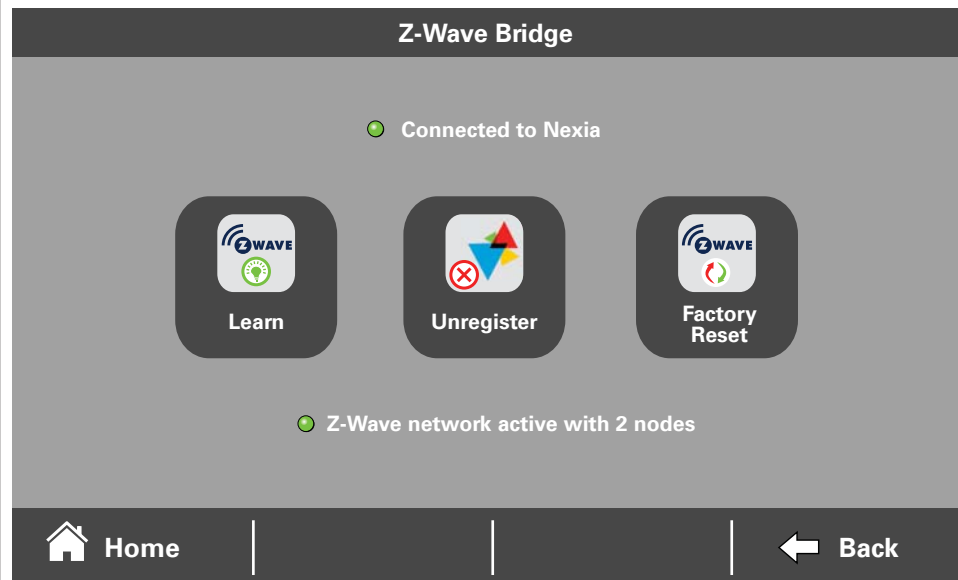
Removes the bridge from Nexia. All remote control features will be disabled.

Factory Reset

Resets all Z-Wave information and removes all devices from the bridge. If this bridge is the primary controller for your network, resetting it will result in all the devices in your network being removed. Following the reset, it will be necessary to remove and then add all of the devices back to your network.

Bridge Information

If this bridge is being used as a secondary or inclusion controller in the network, please reset this bridge only in the event that the primary controller is missing or otherwise inoperable.



Advanced Z-Wave Settings

Association Group Information Table					
Group	Profile	Command Class and Command List	Group Name	Max Number of Devices	Trigger
1	General: Lifeline	Device Reset Locally Notification	Lifeline	5	Factory Reset

Terminology	
The following terms may be used interchangeably by other devices, manufacturers, and Nexia.	
ADD	Add, include, inclusion, enroll, connect
REMOVE	Remove, exclude, exclusion
COPY	Copy, learn, replicate, replication

Other Information	
• Basic Command Class:	This device ignores Basic Set/Get commands.



Other Features

Quiet Mode

Quiet Mode limits compressor operation (heating and cooling mode) to minimum speed from 10 p.m. to 9 a.m. This is to support local noise ordinances in the upper northwest and other regions.

Characteristics of Quiet Mode

- For use with Trane's TruComfort™ variable speed systems.
- During heating mode, indoor heat is allowed if the system cannot maintain space conditions while Quiet Mode is active
- Quiet Mode is only available for VSPD systems using a 1050 control
- Quiet Mode is disabled by default. To enable, from the home screen press **SYSTEM MODE**, then select **SYSTEM OPTIONS** and then **ENABLE**.
- When active, **Quiet** will be displayed below the indoor temperature on the XL1050 home screen

Notices

FCC Notice

INFORMATION TO USER

This device complies with Part 15 of the FCC Rules. Operation is subject to the following two conditions: (1) This device may not cause harmful interference and (2) This device must accept any interference received, including interference that may cause undesired operation. The antenna(s) used for this transmitter must be installed to provide a separation distance of at least 20 cm from all persons and must not be co-located or operating in conjunction with any other antenna or transmitter.

This equipment has been tested and found to comply with the limits for Class B Digital Device, pursuant to Part 15 of the FCC Rules. These limits are designed to provide reasonable protection against harmful interference in a residential installation. This equipment generates and can radiate radio frequency energy and, if not installed and used in accordance with the instructions, may cause harmful interference

to radio communications. However, there is no guarantee that interference will not occur in a particular installation. If this equipment does cause harmful interference to radio or television reception, which can be determined by turning the equipment off and on, the user is encouraged to try to correct the interference by one or more of the following measures.

Reorient or relocate the receiving antenna

Increase the separation between the equipment and receiver

Connect the equipment into an outlet on a circuit different from that to which the receiver is connected

Consult the dealer or an experienced radio/TV technician for help

Any changes or modifications not expressly approved by the party responsible for compliance could void the user's authority to operate the equipment.

IC NOTICE

This device complies with Industry Canada license-exempt RSS standards. Operation is subject to the following two conditions: (1) this device may not cause interference, and (2) this device must accept any interference, including interference that may cause undesired operation of the device.

Le présent appareil est conforme aux CNR d'Industrie Canada applicables aux appareils radio exempts de licence. L'exploitation est autorisée aux deux conditions suivantes : (1) l'appareil ne doit pas produire de brouillage, et (2) l'utilisateur de l'appareil doit accepter tout brouillage radioélectrique subi, même si le brouillage est susceptible d'en compromettre le fonctionnement.

Product Marketing Name: COLOR WIFI Z-WAVE THERMOSTAT
Hardware Version Number: TZON1050AC52ZA



Trane - by Trane Technologies (NYSE: TT), a global climate innovator - creates comfortable, energy efficient indoor environments for commercial and residential applications. For more information, please visit trane.com or tranetechnologies.com.

Trane has a policy of continuous data improvement and it reserves the right to change design and specifications without notice. We are committed to using environmentally conscious print practices.

32-5093-04A-EN 07 Aug 2020

Supersedes 32-5093-04-EN (June 2019)

© 2020 Trane